

Bassoon

# Joe's Last (re)Mix

for electric winds

Robert McCarthy

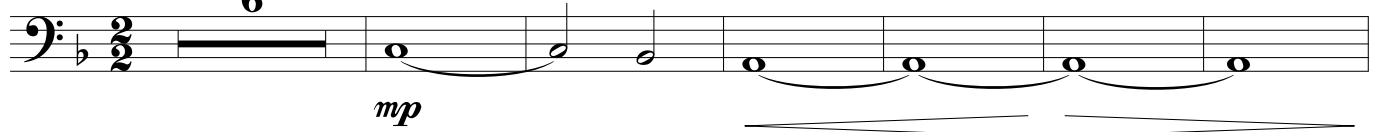
Tanner Menard

$\text{♩} = 108$

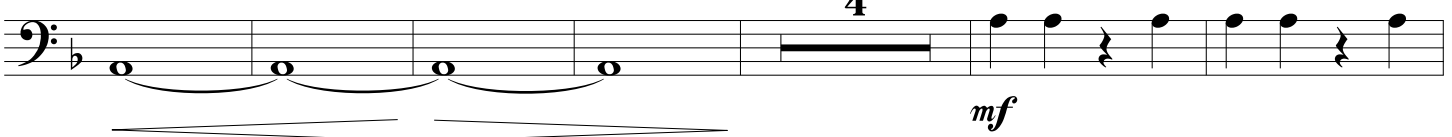
loops ][ layers

6

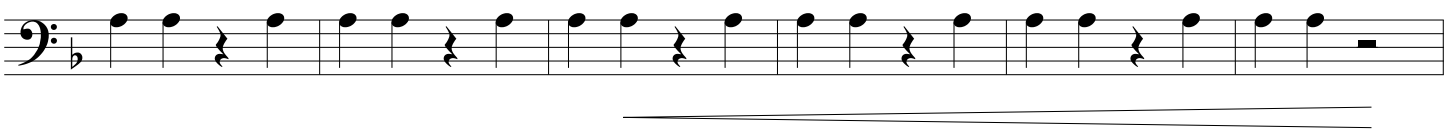
9



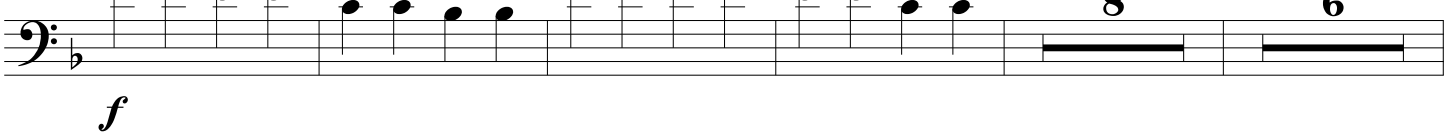
13



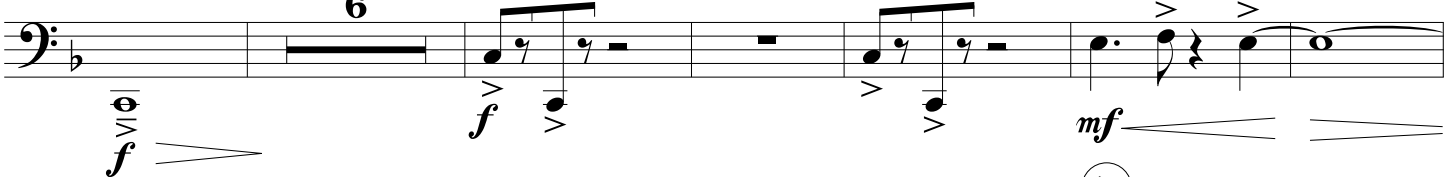
23



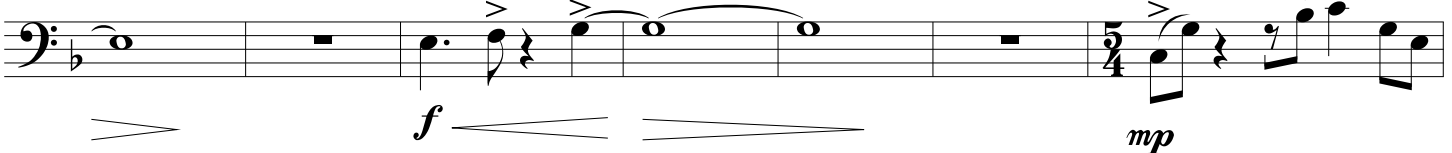
29



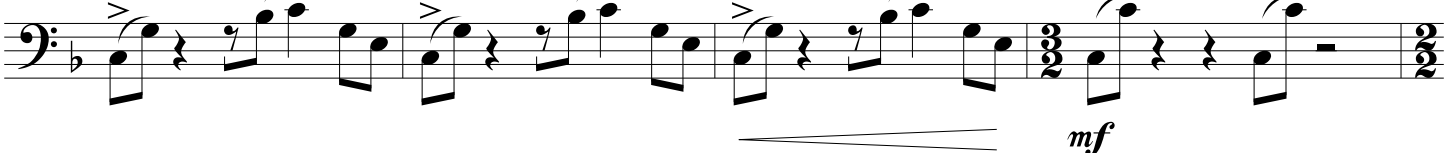
47



59



66



(re)Mix - 2010 Robert McCarthy [www.asiab3.com](http://www.asiab3.com)

Source - 2000 Tanner Menard [www.tannermenard.archaichorizon.com](http://www.tannermenard.archaichorizon.com)

Distributed under CC Attribution-Noncommercial-Share Alike 3.0 United States

## Joe's Last (re)Mix

70 72

*f* *ff*

76 83 song || dance

*fp* 2 3

86 3 3 *f*

96 101 *mp*

102 109

111 15 *f* 129 2

131 *ff* 2

137 139 *mf* 147 7 2

*mf* *f* *mf*

150

155

*f* *ff*

Staff 150-155: Bass clef, key of B-flat major. Measures 150-155. Measure 150 has a half note B-flat. Measure 151 has a half note A-flat. Measure 152 has a half note G. Measure 153 has a half note F. Measure 154 has a half note E. Measure 155 has a half note D. Dynamics: *f* at measure 153, *ff* at measure 155. There is a crescendo hairpin from measure 153 to 155.

156

161

*f* *ff*

Staff 156-161: Bass clef, key of B-flat major. Measures 156-161. Measure 156 has a half note D. Measure 157 has a half note C. Measure 158 has a half note B. Measure 159 has a half note A. Measure 160 has a half note G. Measure 161 has a half note F. Dynamics: *f* at measure 160, *ff* at measure 161. There is a crescendo hairpin from measure 160 to 161.

162

waves ]] echos  
6

Staff 162-167: Bass clef, key of B-flat major. Measures 162-167. Measure 162 has a half note D. Measure 163 has a half note C. Measure 164 has a half note B. Measure 165 has a half note A. Measure 166 has a half note G. Measure 167 has a half note F. There is a repeat sign at the end of the staff. The word "waves" is written above the staff, and "]] echos" is written below the staff. The number "6" is written below the staff.

175

3 5

*f* *f*

Staff 175-188: Bass clef, key of B-flat major. Measures 175-188. Measure 175 has a half note D. Measure 176 has a half note C. Measure 177 has a half note B. Measure 178 has a half note A. Measure 179 has a half note G. Measure 180 has a half note F. Measure 181 has a half note E. Measure 182 has a half note D. Measure 183 has a half note C. Measure 184 has a half note B. Measure 185 has a half note A. Measure 186 has a half note G. Measure 187 has a half note F. Measure 188 has a half note E. Dynamics: *f* at measure 175, *f* at measure 185. There are two crescendo hairpins, one from measure 175 to 180 and another from measure 185 to 190.

189

3

*f*

Staff 189-198: Bass clef, key of B-flat major. Measures 189-198. Measure 189 has a half note D. Measure 190 has a half note C. Measure 191 has a half note B. Measure 192 has a half note A. Measure 193 has a half note G. Measure 194 has a half note F. Measure 195 has a half note E. Measure 196 has a half note D. Measure 197 has a half note C. Measure 198 has a half note B. Dynamics: *f* at measure 189. There is a crescendo hairpin from measure 189 to 190.

199

D-1/2 D-0

2

*ff*

Staff 199-204: Bass clef, key of B-flat major. Measures 199-204. Measure 199 has a half note D. Measure 200 has a half note C. Measure 201 has a half note B. Measure 202 has a half note A. Measure 203 has a half note G. Measure 204 has a half note F. Dynamics: *ff* at measure 199. There is a crescendo hairpin from measure 199 to 200.